



# LİDER GRUP

Prefabrik, Çelik İnşaat Taahhüt LTD. ŞTİ.

## HAKKIMIZDA

Hafif çelik yapılar, lüks konutlar, prefabrik yapılar, bahçe evleri, şantiye binaları, ticari yapılar ve konteyner başlıklarında faaliyet göstermekteyiz. “Lider Grup” olarak yılların bilgi birikim ve tecrübesiyle, prefabrik ve çelik yapı sektöründe hizmet vermekteyiz. İmalatlarımız kendi tesislerimizde “Lider Grup” kalite ve güvencesi ile yapılmaktadır.

Yüksek standartlarda ve yüksek kalitede yapılar üretmeyi ilke edinen şirketimizde, müşteri ve hizmet odaklı yaklaşımlar, çalışma anlayışımızın temelini oluşturmaktadır.

Alanlarında uzman, Mimar, Mühendis kadromuz ve personellerimiz ile, sizlere beklentilerinizi projelendirme konusunda destek olmaya hazırız. Değerli müşterilerimize hizmet vermekten onur duyacağız...

## KALİTE POLİTİKAMIZ

“Lider Grup” olarak; gelişen ve güncel teknolojileri kullanıp, müşteri beklentilerini aşarak, kolay satın alınabilir, güvenilir ürünler geliştirip, üretir ve satış sonrası hizmet veririz.

## MİSYONUMUZ

Müşterilerimizin tam olarak ne istediğini anlayan, onlara alternatif çözümler sunan, kaliteye ve temin süresine bağlılığı önemseyen, verdiği sözler ve taahhütler ile güven inşa etmek.

## VİZYONUMUZ

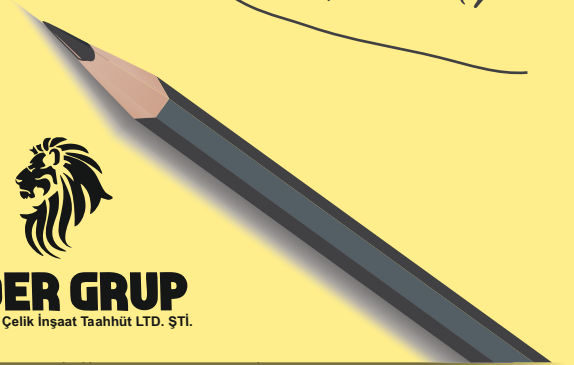
Üretim kapasitesi, kalite standartları, verimliliği ve kârlılığı ile sektöründe Lider olmak. Ürettiği ürünler ve sunduğu hizmetler ile ülke ekonomisine ve istihdama katkıda bulunarak hem kazanan, hem de kazandıran örnek bir şirket olmak.



# Standart Yapılar



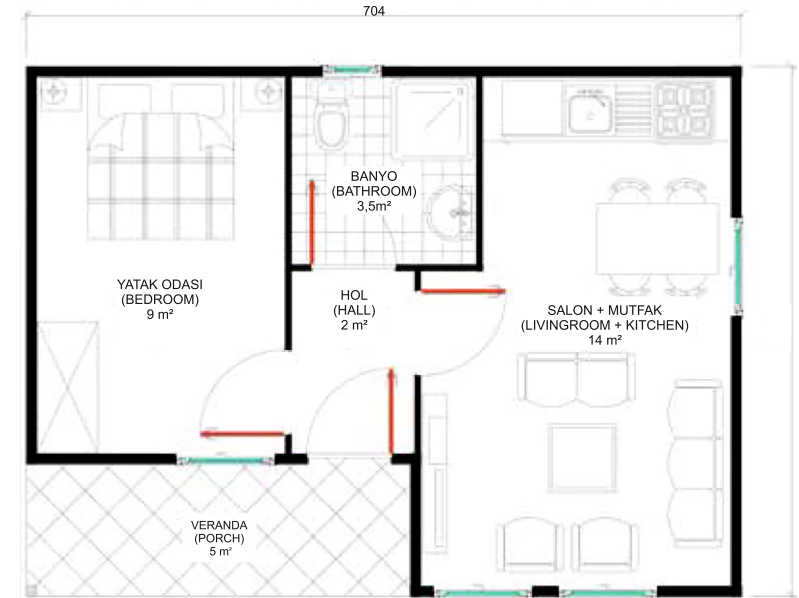
**LİDER GRUP**  
Prefabrik, Çelik İnşaat Taahhüt LTD. ŞTİ.





# Fronta

37 m<sup>2</sup>



Salon + Mutfak  
Livingroom + Kitchen 14 m<sup>2</sup>

Yatak Odası  
Bedroom 9 m<sup>2</sup>

Banyo  
Bathroom 3,5 m<sup>2</sup>

Hol  
Hall 2 m<sup>2</sup>

Veranda  
Porch 5 m<sup>2</sup>

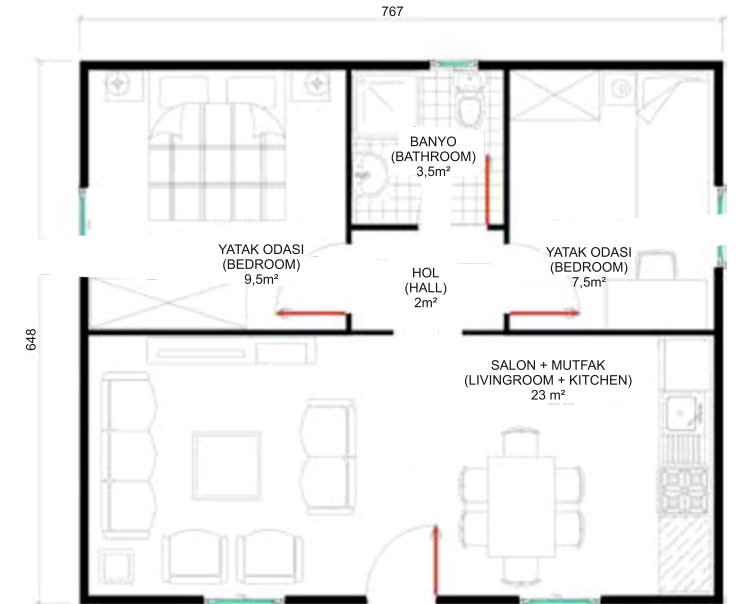


4



# Göven

50 m<sup>2</sup>



Salon + Mutfak  
Livingroom + Kitchen 23 m<sup>2</sup>

Yatak Odası  
Bedroom 9,5 m<sup>2</sup>

Yatak Odası  
Bedroom 7,5 m<sup>2</sup>

Hol  
Hall 2 m<sup>2</sup>

Banyo  
Bathroom 3,5 m<sup>2</sup>



# Haseki

68 m<sup>2</sup>



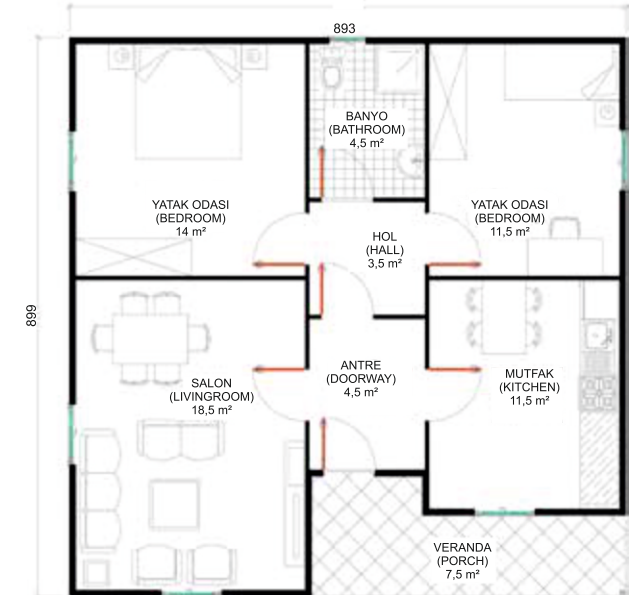
Salon Livingroom	18,5 m <sup>2</sup>	Banyo Bathroom	4,5 m <sup>2</sup>
Yatak Odası Bedroom	12 m <sup>2</sup>	Mutfak Kitchen	9 m <sup>2</sup>
Yatak Odası Bedroom	9 m <sup>2</sup>	Veranda Porch	5 m <sup>2</sup>
Hol Hall	6 m <sup>2</sup>		





# Meyan

80 m<sup>2</sup>



Salon Livingroom	18,5 m <sup>2</sup>	Banyo Bathroom	4,5 m <sup>2</sup>
Yatak Odası Bedroom	14 m <sup>2</sup>	Mutfak Kitchen	11,5 m <sup>2</sup>
Yatak Odası Bedroom	11,5 m <sup>2</sup>	Veranda Porch	7,5 m <sup>2</sup>
Antre Doorway	8 m <sup>2</sup>		





# Kevke

91 m<sup>2</sup>



Salon  
Livingroom 18,5 m<sup>2</sup>

Oda  
Room 14 m<sup>2</sup>

Mutfak  
Kitchen 9,5 m<sup>2</sup>

Antre  
Doorway 10,5 m<sup>2</sup>

Yatak Odası  
Bedroom 12 m<sup>2</sup>

Yatak Odası  
Bedroom 14 m<sup>2</sup>

Veranda  
Porch 3 m<sup>2</sup>

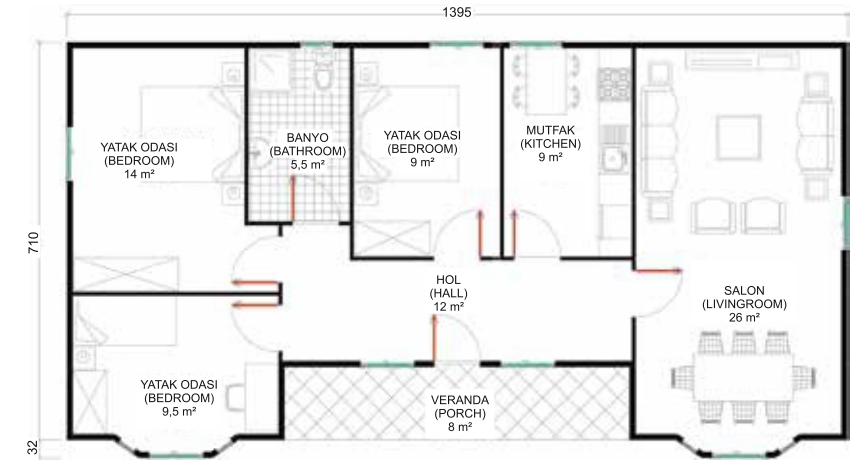






# Lâden

106 m<sup>2</sup>



Salon Livingroom	26 m <sup>2</sup>	Hol Hall	12 m <sup>2</sup>
Yatak Odası Bedroom	14 m <sup>2</sup>	Mutfak Kitchen	9 m <sup>2</sup>
Yatak Odası Bedroom	9,5 m <sup>2</sup>	Banyo Bathroom	5,5 m <sup>2</sup>
Yatak Odası Bedroom	9 m <sup>2</sup>	Veranda Porch	8 m <sup>2</sup>



# Fulya

126 m<sup>2</sup>

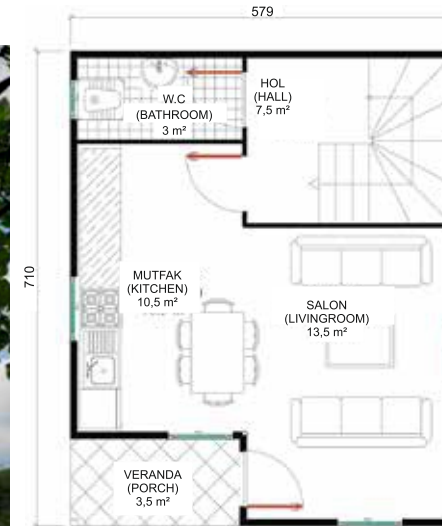


Salon Livingroom	27 m <sup>2</sup>	Mutfak Kitchen	11,5 m <sup>2</sup>
Oda Room	16 m <sup>2</sup>	Banyo Bathroom	6 m <sup>2</sup>
Oda Room	11,5 m <sup>2</sup>	W.C. Bathroom	3 m <sup>2</sup>
Yatak Odası Bedroom	16 m <sup>2</sup>	Veranda Porch	11 m <sup>2</sup>
Hol Hall	16 m <sup>2</sup>		

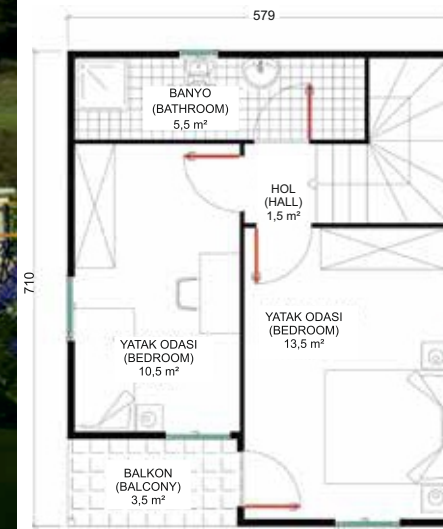


# Mahmur

82 m<sup>2</sup>



<b>Zemin Kat</b>	<b>41 m<sup>2</sup></b>
Salon // Livingroom	13,5 m <sup>2</sup>
Mutfak // Kitchen	10,5 m <sup>2</sup>
Hol // Hall	7,5 m <sup>2</sup>
W.C // Bathroom	3 m <sup>2</sup>

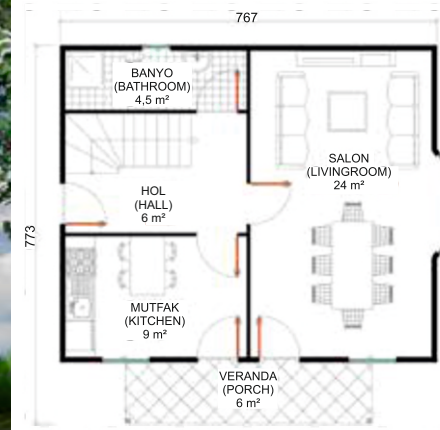


<b>1.Kat</b>	<b>41 m<sup>2</sup></b>
Yatak Odası // Bedroom	13,5 m <sup>2</sup>
Yatak Odası // Bedroom	10,5 m <sup>2</sup>
Hol // Hall	1,5 m <sup>2</sup>
Banyo // Bathroom	5,5 m <sup>2</sup>
Balkon // Balcony	3,5 m <sup>2</sup>

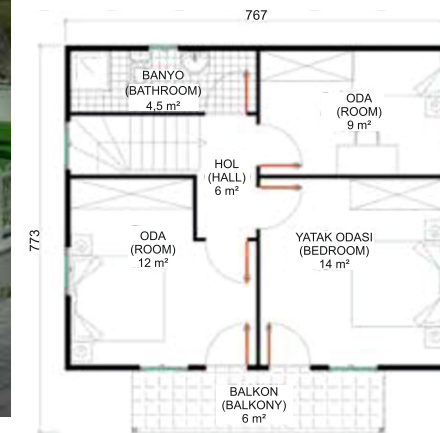


# Penceremi

113 m<sup>2</sup>



<b>Zemin Kat</b>	<b>57 m<sup>2</sup></b>
Salon // Livingroom	24 m <sup>2</sup>
Mutfak // Kitchen	9 m <sup>2</sup>
Banyo // Bathroom	4,5 m <sup>2</sup>
Hol // Hall	6 m <sup>2</sup>
Veranda // Porch	6 m <sup>2</sup>



<b>1.Kat</b>	<b>56 m<sup>2</sup></b>
Oda // Room	9 m <sup>2</sup>
Oda // Room	12 m <sup>2</sup>
Yatak Odası // Bedroom	14 m <sup>2</sup>
Hol // Hall	6 m <sup>2</sup>
Banyo // Bathroom	4,5 m <sup>2</sup>
Balkon // Balcony	6 m <sup>2</sup>

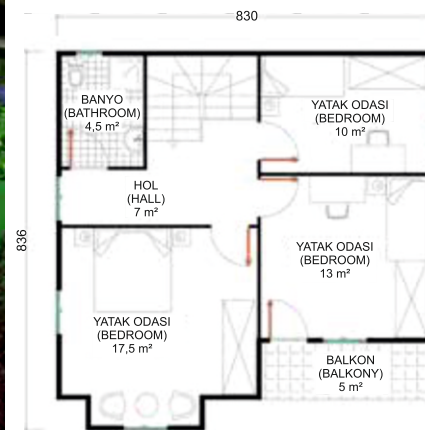


# Engüvan

131 m<sup>2</sup>



Zemin Kat	65 m <sup>2</sup>
Salon // Livingroom	26,5 m <sup>2</sup>
Mutfak // Kitchen	13,5 m <sup>2</sup>
Hol // Hall	7 m <sup>2</sup>
W.C // Bathroom	4 m <sup>2</sup>
Veranda // Porch	5 m <sup>2</sup>



1.Kat	66 m <sup>2</sup>
Yatak Odası // Bedroom	23 m <sup>2</sup>
Yatak Odası // Bedroom	17,5 m <sup>2</sup>
Hol // Hall	7 m <sup>2</sup>
Banyo // Bathroom	4,5 m <sup>2</sup>
Balkon // Balcony	5 m <sup>2</sup>



# Firuze

145 m<sup>2</sup>



<b>Zemin Kat</b>	<b>72,5 m<sup>2</sup></b>
Salon // Livingroom	23 m <sup>2</sup>
Oda // Room	6 m <sup>2</sup>
Antre // Doorway	10,5 m <sup>2</sup>
Mutfak // Kitchen	14 m <sup>2</sup>
W.C // Bathroom	1,5 m <sup>2</sup>
Antre // Doorway	6,5 m <sup>2</sup>

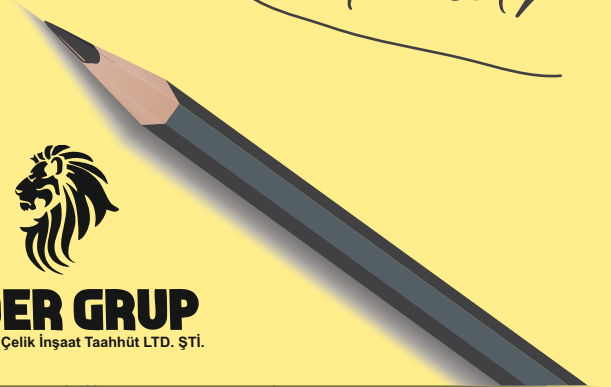


<b>1.Kat</b>	<b>72,5 m<sup>2</sup></b>
Yatak Odası // Bedroom	9,5 m <sup>2</sup>
Yatak Odası // Bedroom	14,5 m <sup>2</sup>
Yatak Odası // Bedroom	14,5 m <sup>2</sup>
Hol // Hall	9 m <sup>2</sup>
Banyo // Bathroom	6 m <sup>2</sup>
Ebeveyn Banyosu Ensuite Bathroom	3 m <sup>2</sup>
Balkon // Balcony	6,5 m <sup>2</sup>

# Lüks Yapılar



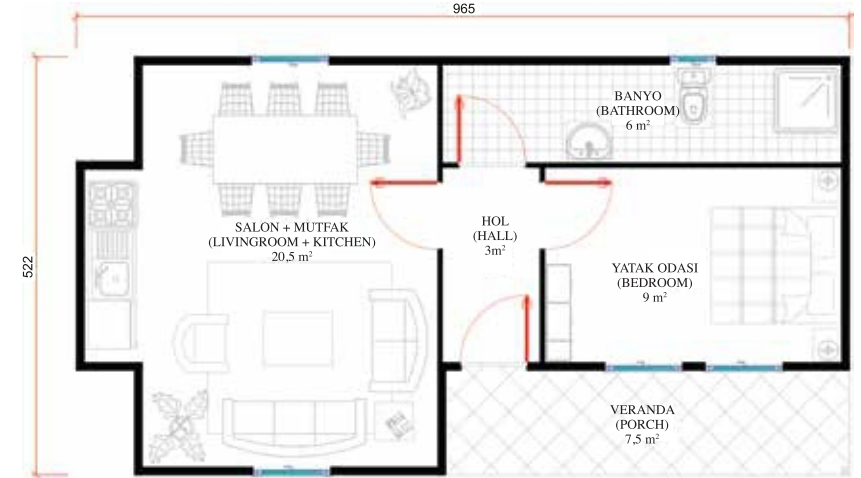
**LİDER GRUP**  
Prefabrik, Çelik İnşaat Taahhüt LTD. ŞTİ.





# Ihlamur

45 m<sup>2</sup>



Salon + Mutfak  
Livingroom + Kitchen 18,5 m<sup>2</sup>

Yatak Odası  
Bedroom 9 m<sup>2</sup>

Banyo  
Bathroom 6 m<sup>2</sup>

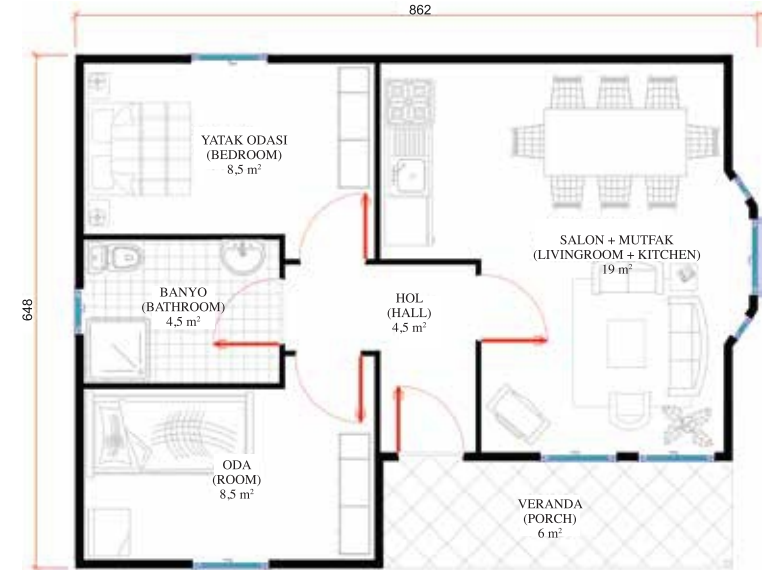
Hol  
Hall 3 m<sup>2</sup>

Veranda  
Porch 7,5 m<sup>2</sup>





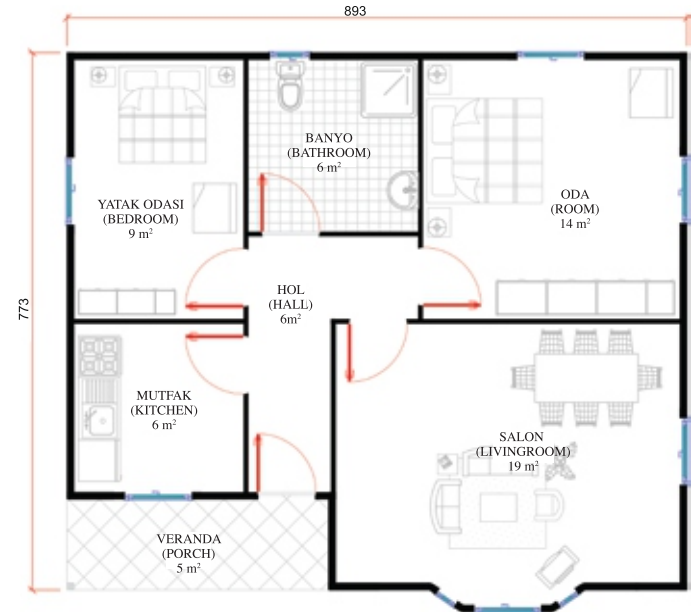
# Gardenya 55 m<sup>2</sup>



Salon + Mutfak <i>Livingroom + Kitchen</i>	19 m <sup>2</sup>	Hol <i>Hall</i>	4,5 m <sup>2</sup>
Yatak Odası <i>Bedroom</i>	8,5 m <sup>2</sup>	Banyo <i>Bathroom</i>	4,5 m <sup>2</sup>
Oda <i>Room</i>	8,5 m <sup>2</sup>	Veranda <i>Porch</i>	6 m <sup>2</sup>



# Kasempate 69 m<sup>2</sup>



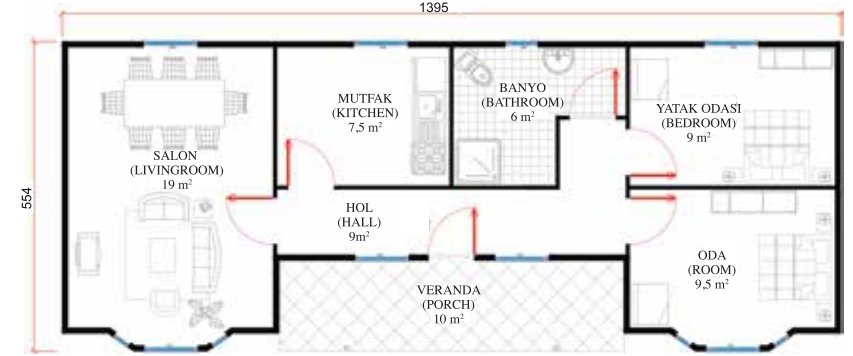
Salon Livingroom	19 m <sup>2</sup>	Mutfak Kitchen	6 m <sup>2</sup>
Yatak Odası Bedroom	9 m <sup>2</sup>	Banyo Bathroom	6 m <sup>2</sup>
Oda Room	14 m <sup>2</sup>	Veranda Porch	5 m <sup>2</sup>
Hol Hall	6 m <sup>2</sup>		





# Katalpa

69 m<sup>2</sup>



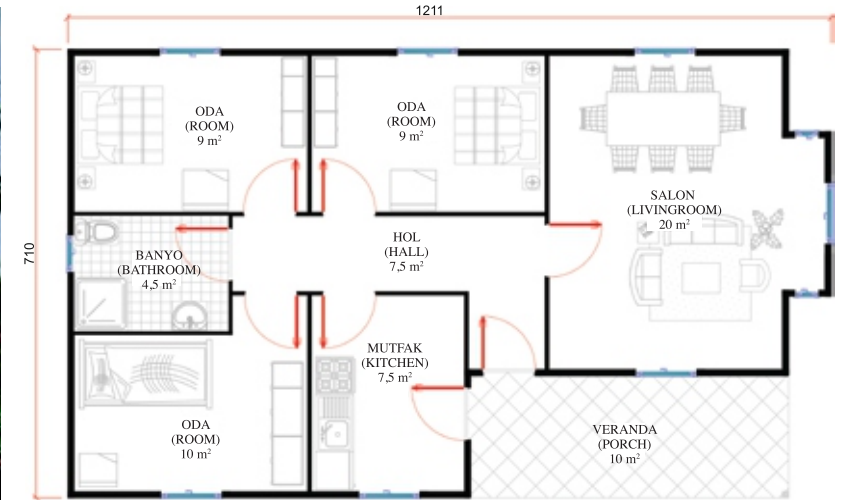
Salon Livingroom	19 m <sup>2</sup>
Yatak Odası Bedroom	9 m <sup>2</sup>
Oda Room	9,5 m <sup>2</sup>
Mutfak Kitchen	7,5 m <sup>2</sup>

Banyo Bathroom	6 m <sup>2</sup>
Hol Hall	9 m <sup>2</sup>
Veranda Porch	10 m <sup>2</sup>



# Enderun

84 m<sup>2</sup>



Salon <i>Livingroom</i>	20 m <sup>2</sup>	Mutfak <i>Kitchen</i>	7,5 m <sup>2</sup>
Oda <i>Room</i>	9 m <sup>2</sup>	Banyo <i>Bathroom</i>	4,5 m <sup>2</sup>
Oda <i>Room</i>	9 m <sup>2</sup>	Hol <i>Hall</i>	7,5 m <sup>2</sup>
Oda <i>Room</i>	10 m <sup>2</sup>	Veranda <i>Porch</i>	10 m <sup>2</sup>



# Mahpeyken 92 m<sup>2</sup>



Salon  
Livingroom 18 m<sup>2</sup>

Oda  
Room 12 m<sup>2</sup>

Oda  
Room 9 m<sup>2</sup>

Oda  
Room 11,5 m<sup>2</sup>

Mutfak  
Kitchen 7,5 m<sup>2</sup>

Banyo  
Bathroom 4,5 m<sup>2</sup>

Hol  
Hall 8 m<sup>2</sup>

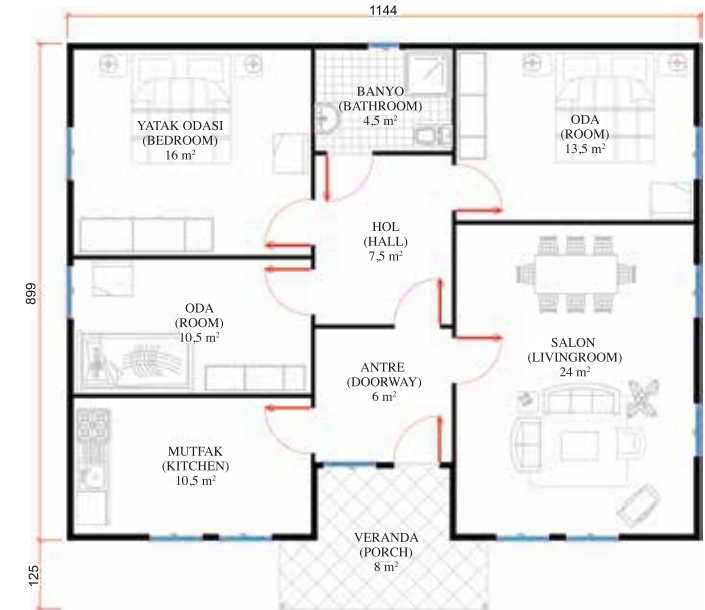
Hol  
Hall 2 m<sup>2</sup>

Veranda  
Porch 12,5 m<sup>2</sup>



# Efsun

## 108 m<sup>2</sup>

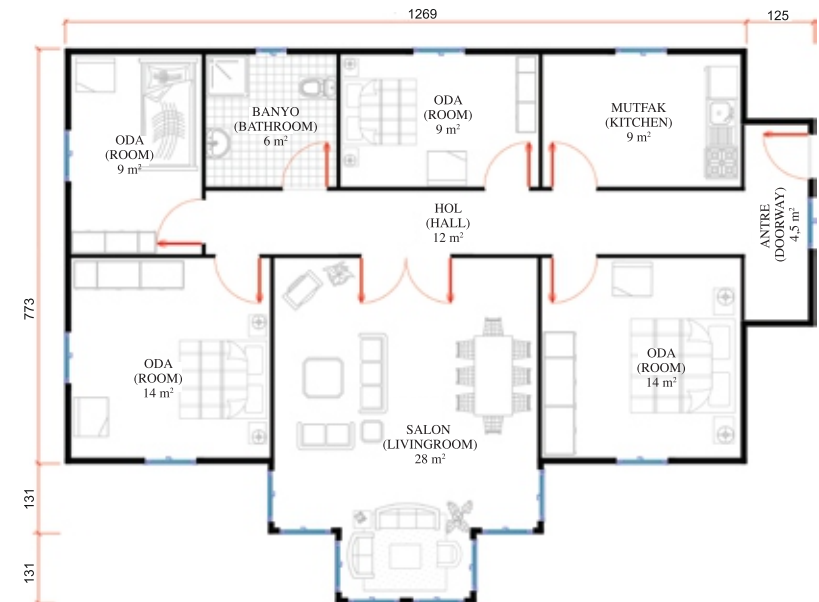


Salon Livingroom	24 m <sup>2</sup>	Banyo Bathroom	4,5 m <sup>2</sup>
Oda Room	13,5 m <sup>2</sup>	Hol Hall	7,5 m <sup>2</sup>
Yatak Odası Bedroom	16 m <sup>2</sup>	Antre Doorway	6 m <sup>2</sup>
Oda Room	10 m <sup>2</sup>	Veranda Porch	8 m <sup>2</sup>
Mutfak Kitchen	10,5 m <sup>2</sup>		



# Aksen

115 m<sup>2</sup>

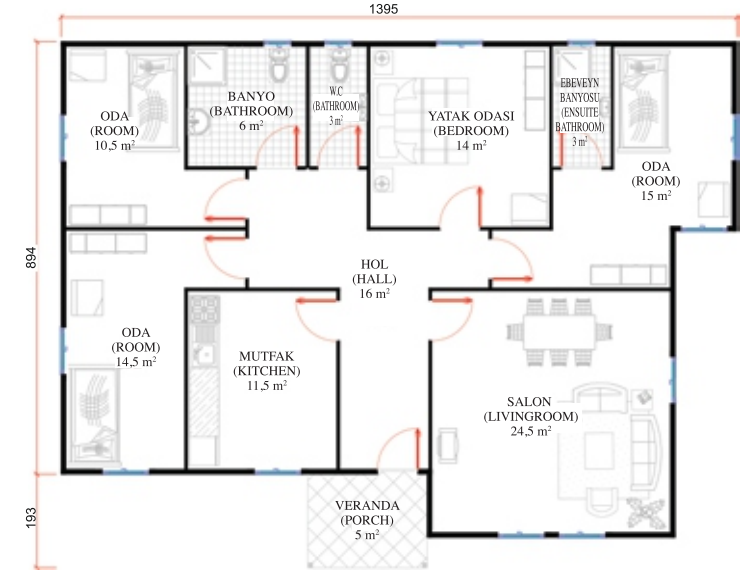


Salon Livingroom	28 m <sup>2</sup>	Mutfak Kitchen	9 m <sup>2</sup>
Oda Room	14 m <sup>2</sup>	Banyo Bathroom	6 m <sup>2</sup>
Oda Room	14 m <sup>2</sup>	Hol Hall	12 m <sup>2</sup>
Oda Room	9 m <sup>2</sup>	Antre Doorway	4,5 m <sup>2</sup>
Oda Room	9 m <sup>2</sup>		



# Dilnuba

132 m<sup>2</sup>



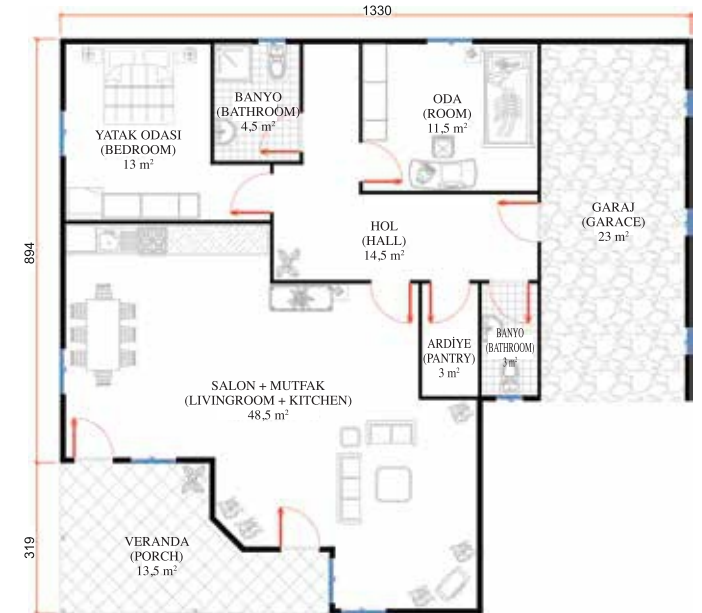
Salon Livingroom	24,5 m <sup>2</sup>	Banyo Bathroom	6 m <sup>2</sup>
Oda Room	14 m <sup>2</sup>	Ebeveyn Banyosu Ensuite Bathroom	3 m <sup>2</sup>
Yatak Odası Bedroom	15 m <sup>2</sup>	W.C. Bathroom	3 m <sup>2</sup>
Oda Room	10,5 m <sup>2</sup>	Hol Hall	16 m <sup>2</sup>
Oda Room	14,5 m <sup>2</sup>	Veranda Porch	5 m <sup>2</sup>
Mutfak Kitchen	10,5 m <sup>2</sup>		





# Andiç

136 m<sup>2</sup>



## Salon + Mutfak

Livingroom + Kitchen 48,5 m<sup>2</sup>

## Yatak Odası

Bedroom 13 m<sup>2</sup>

## Oda

Room 11,5 m<sup>2</sup>

## Banyo

Bathroom 4,5 m<sup>2</sup>

## Banyo

Bathroom 3 m<sup>2</sup>

## Hol

Hall 14,5 m<sup>2</sup>

## Ardiye

Pantry 3 m<sup>2</sup>

## Veranda

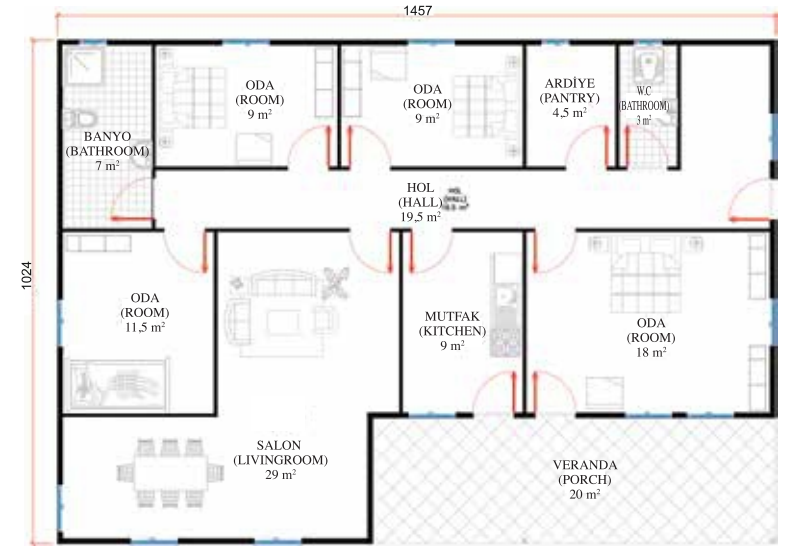
Porch 13,5 m<sup>2</sup>

## Garaj

Garage 23 m<sup>2</sup>



# Gülhatmi 150 m<sup>2</sup>



Salon Livingroom	29 m <sup>2</sup>	Banyo Bathroom	7 m <sup>2</sup>
Oda Room	18 m <sup>2</sup>	W.C Bathroom	3 m <sup>2</sup>
Oda Room	11,5 m <sup>2</sup>	Ardiye Pantry	4,5 m <sup>2</sup>
Oda Room	9 m <sup>2</sup>	Hol Hall	19,5 m <sup>2</sup>
Oda Room	9 m <sup>2</sup>	Veranda Porch	20 m <sup>2</sup>
Mutfak Kitchen	9 m <sup>2</sup>		

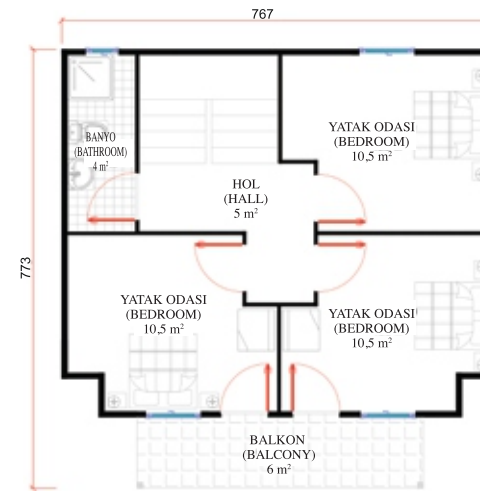


# Ahuzan

110 m<sup>2</sup>



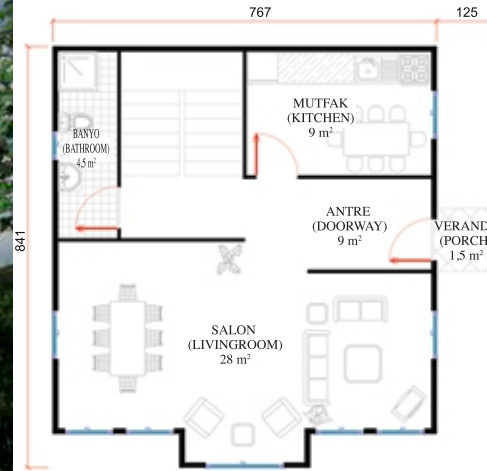
<b>Zemin Kat:</b>	<b>55 m<sup>2</sup></b>
Veranda // Porch	5 m <sup>2</sup>
Mutfak // Kitchen	11 m <sup>2</sup>
Salon // Livingroom	23 m <sup>2</sup>
Hol // Hall	3 m <sup>2</sup>
Banyo // Bathroom	4 m <sup>2</sup>



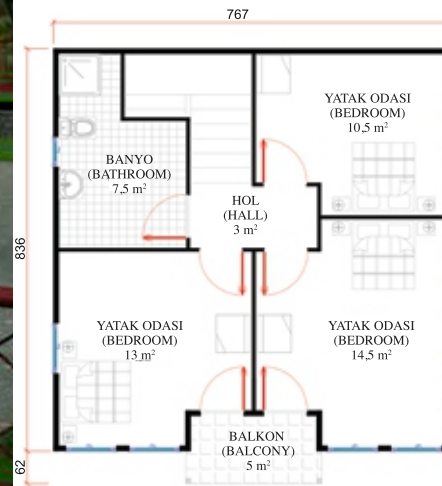
<b>1.Kat:</b>	<b>55 m<sup>2</sup></b>
Balkon // Balcony	6 m <sup>2</sup>
Yatak Odası // Bedroom	10,5 m <sup>2</sup>
Yatak Odası // Bedroom	10,5 m <sup>2</sup>
Yatak Odası // Bedroom	10,5 m <sup>2</sup>
Hol // Hall	5 m <sup>2</sup>
Banyo // Bathroom	4 m <sup>2</sup>



# Yenibakarın 124 m<sup>2</sup>



<b>Zemin Kat:</b>	<b>55 m<sup>2</sup></b>
Salon // Livingroom	28 m <sup>2</sup>
Antre // Doorway	9 m <sup>2</sup>
Veranda // Porch	1,5 m <sup>2</sup>
Banyo // Bathroom	4,5 m <sup>2</sup>
Mutfak // Kitchen	9 m <sup>2</sup>

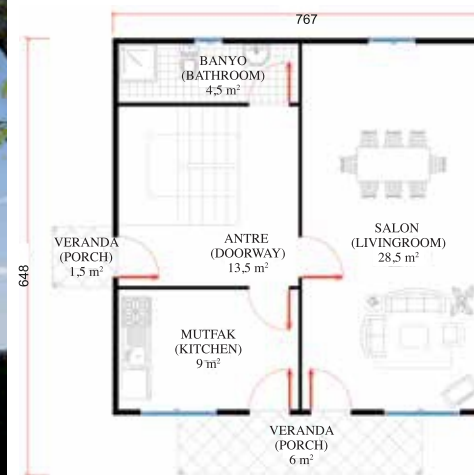


<b>1.Kat:</b>	<b>61 m<sup>2</sup></b>
Yatak Odası // Bedroom	13 m <sup>2</sup>
Yatak Odası // Bedroom	14,5 m <sup>2</sup>
Yatak Odası // Bedroom	10,5 m <sup>2</sup>
Banyo // Bathroom	7,5 m <sup>2</sup>
Hol // Hall	3 m <sup>2</sup>
Balkon // Balcony	5 m <sup>2</sup>

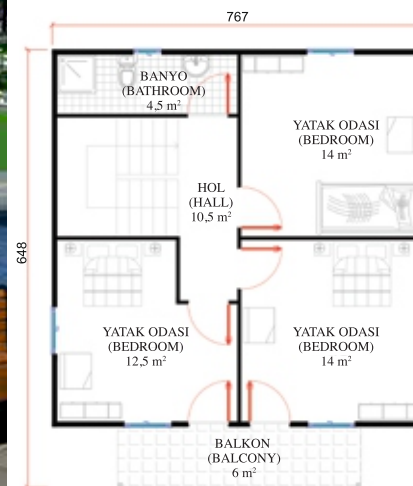


# Hüma

132 m<sup>2</sup>



<b>Zemin Kat:</b>	<b>67 m<sup>2</sup></b>
Veranda // Porch	6 m <sup>2</sup>
Mutfak // Kitchen	9 m <sup>2</sup>
Salon // Livingroom	28,5 m <sup>2</sup>
Antre // Doorway	13,5 m <sup>2</sup>
Veranda // Porch	1,5 m <sup>2</sup>
Banyo // Bathroom	4,5 m <sup>2</sup>

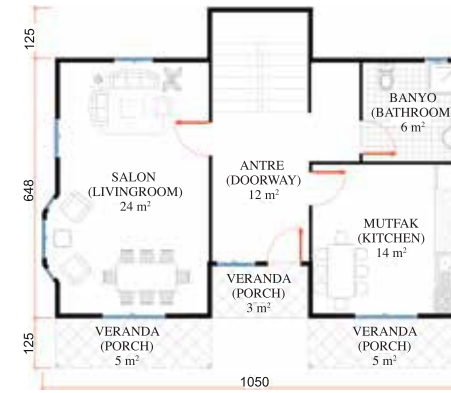


<b>1.Kat:</b>	<b>65 m<sup>2</sup></b>
Yatak Odası // Bedroom	14 m <sup>2</sup>
Yatak Odası // Bedroom	12,5 m <sup>2</sup>
Yatak Odası // Bedroom	14 m <sup>2</sup>
Banyo // Bathroom	4,5 m <sup>2</sup>
Hol // Hall	10,5 m <sup>2</sup>
Balkon // Balcony	6 m <sup>2</sup>

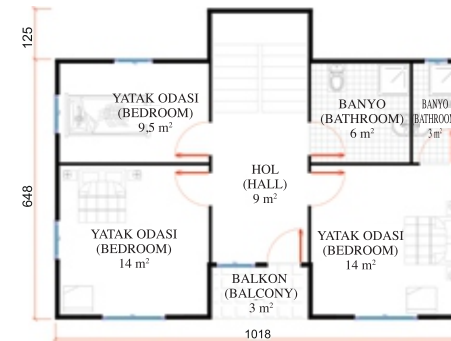


# Akağaç

150 m<sup>2</sup>



<b>Zemin Kat:</b>	<b>81 m<sup>2</sup></b>
Veranda // Porch	5 m <sup>2</sup>
Veranda // Porch	5 m <sup>2</sup>
Veranda // Porch	3 m <sup>2</sup>
Salon // Livingroom	24 m <sup>2</sup>
Antre // Doorway	12 m <sup>2</sup>
Mutfak // Kitchen	14 m <sup>2</sup>
Banyo // Bathroom	6 m <sup>2</sup>

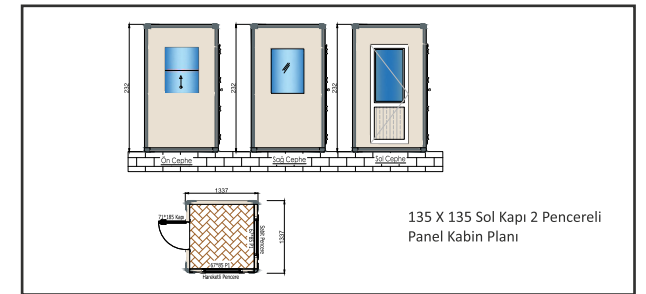
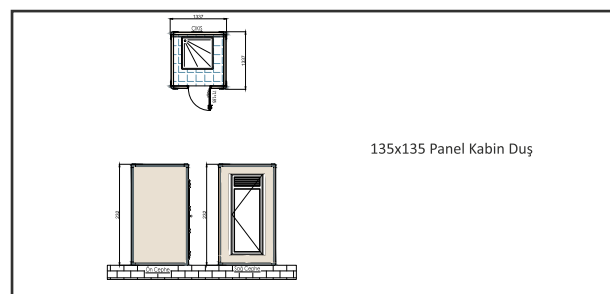
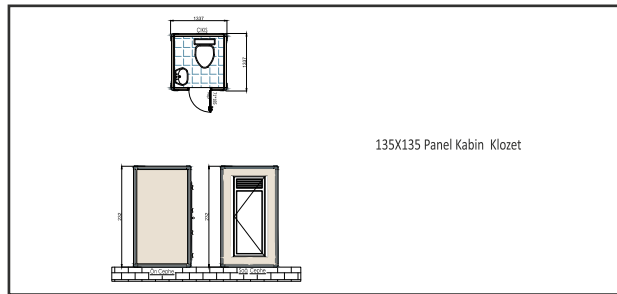
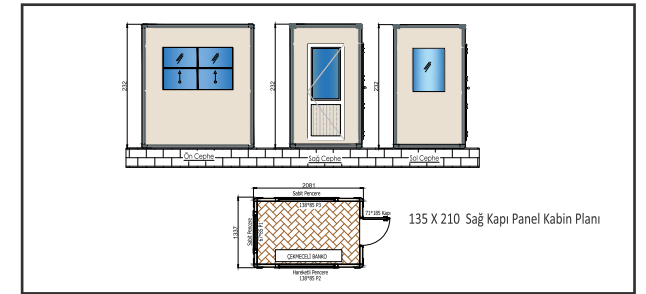
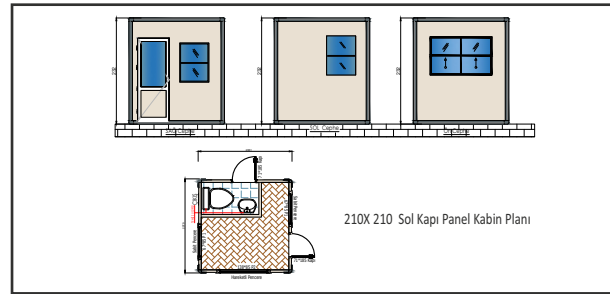
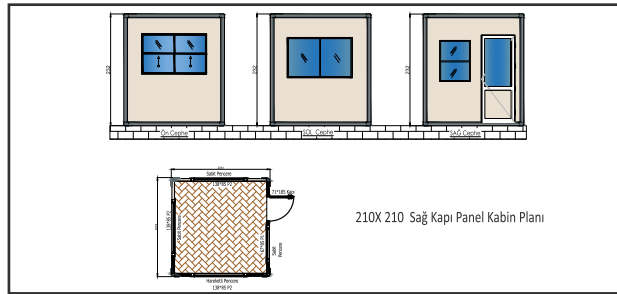
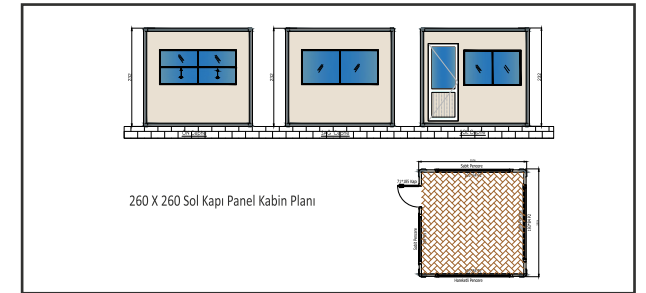
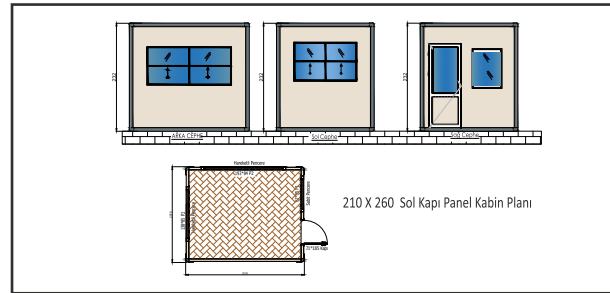
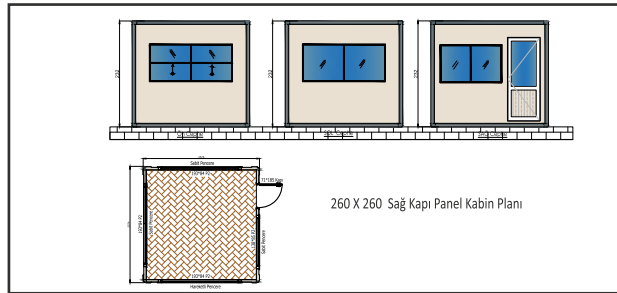
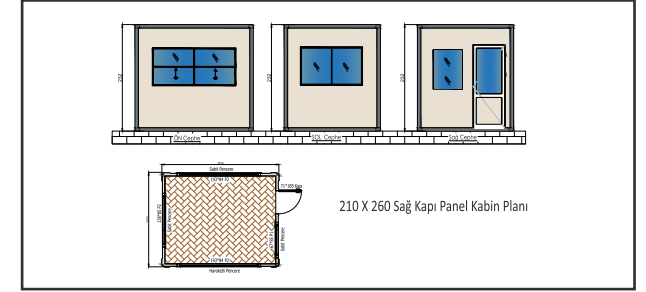
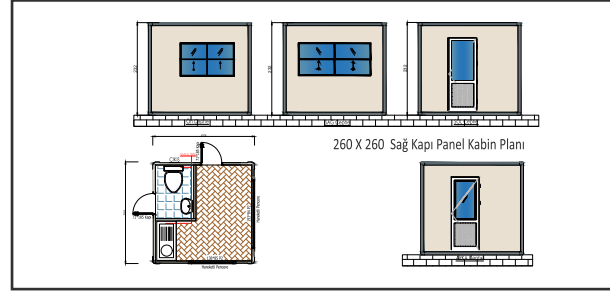
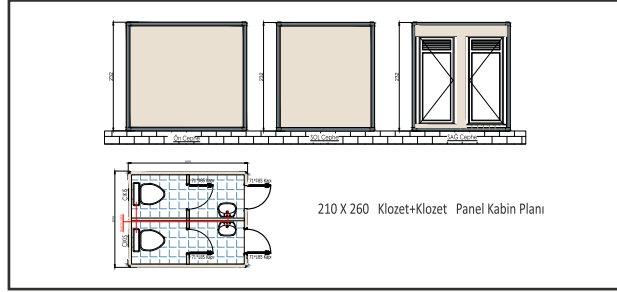


<b>1. Kat:</b>	<b>69 m<sup>2</sup></b>
Balkon // Balcony	3 m <sup>2</sup>
Yatak Odası // Bedroom	14 m <sup>2</sup>
Yatak Odası // Bedroom	14 m <sup>2</sup>
Hol // Hall	9 m <sup>2</sup>
Yatak Odası // Bedroom	9,5 m <sup>2</sup>
Banyo // Bathroom	6 m <sup>2</sup>
Banyo // Bathroom	3 m <sup>2</sup>



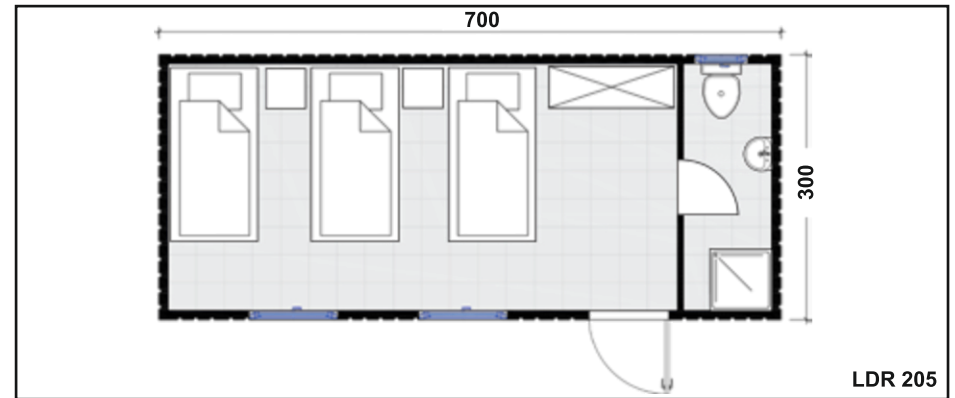
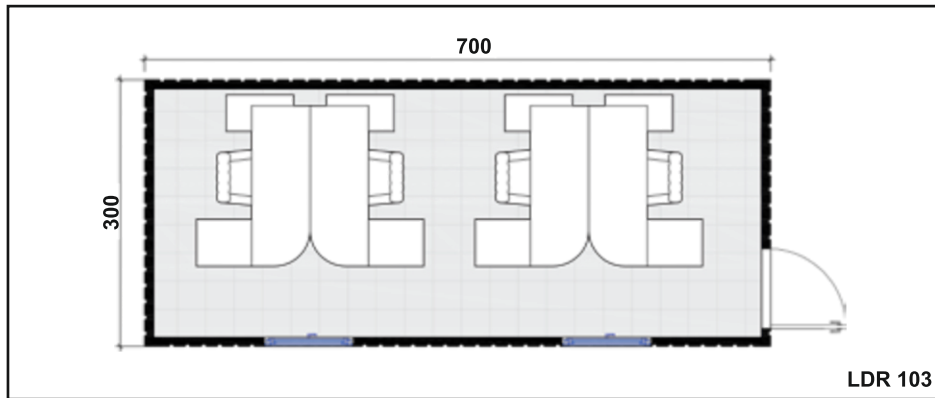
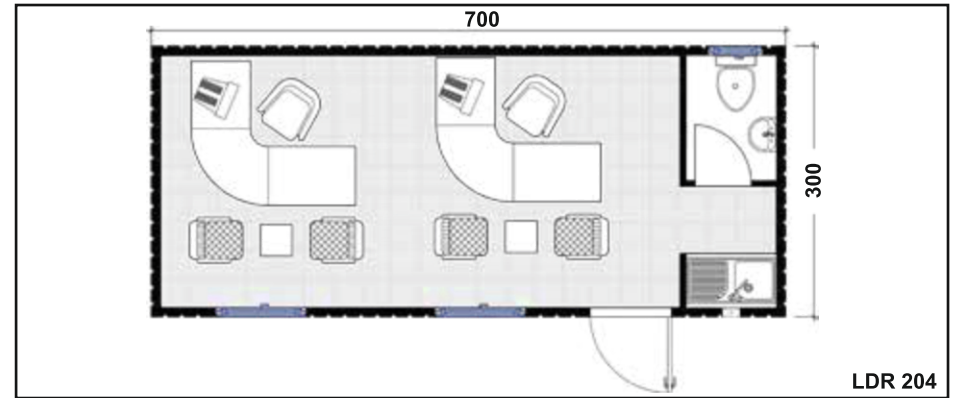
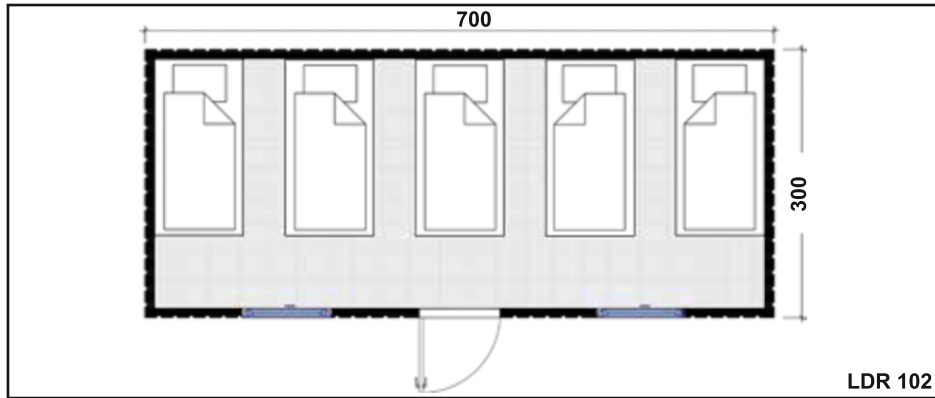
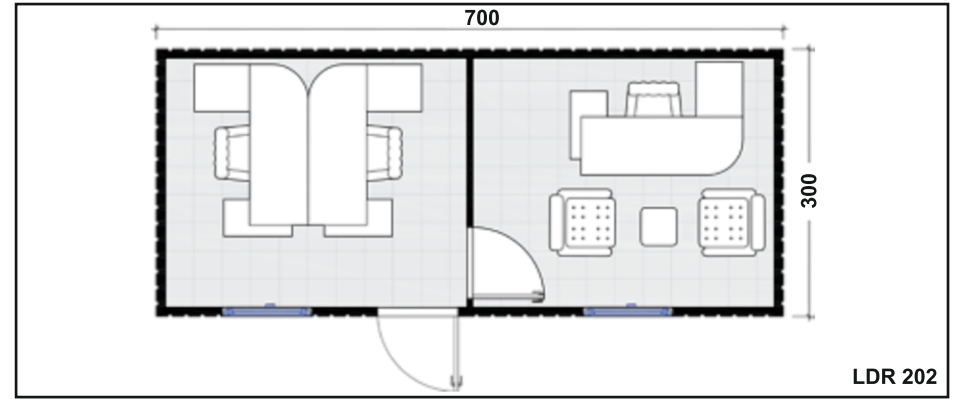
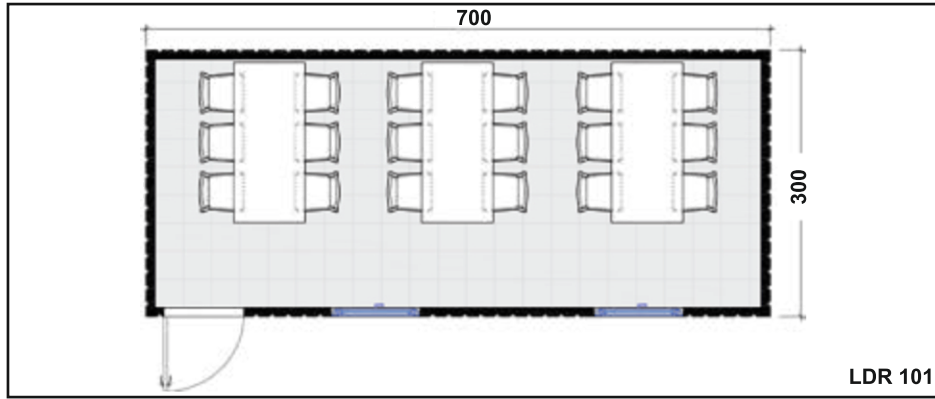
Siz TASARLAYIN biz YAPALIM...

# KABİN

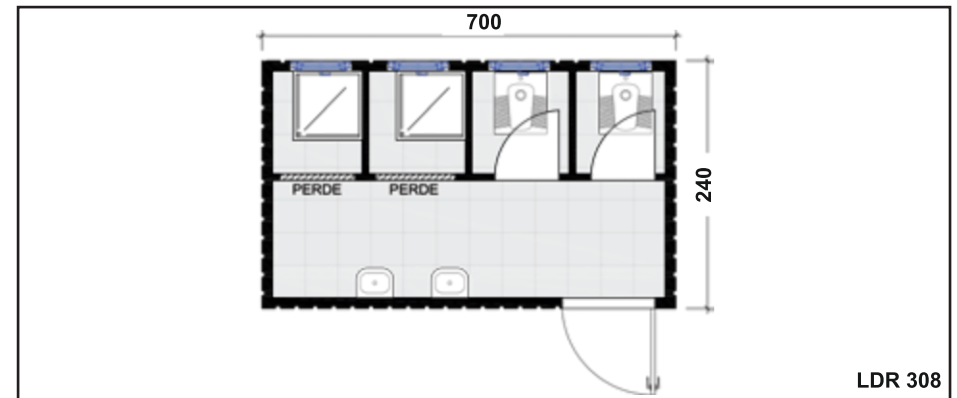
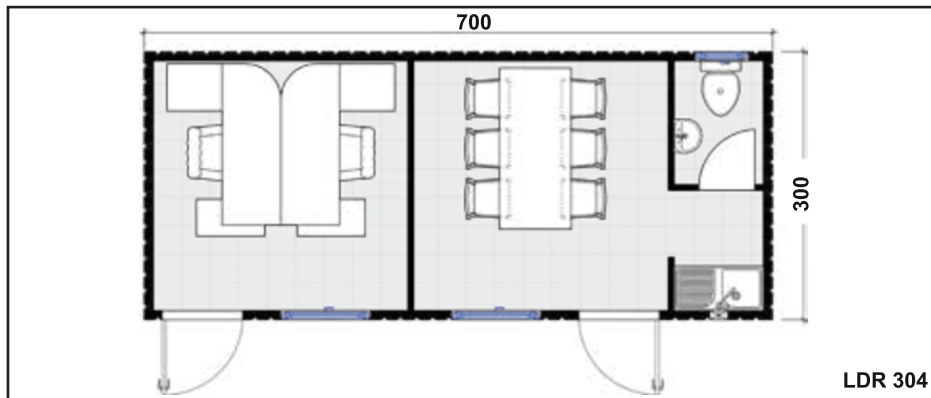
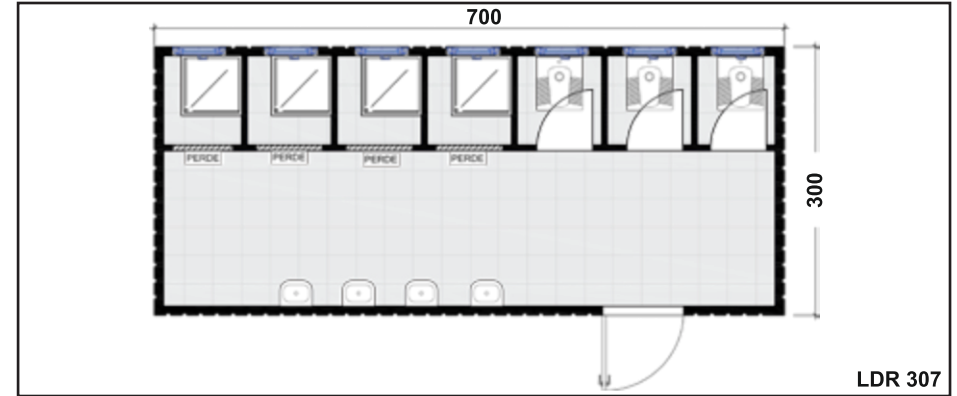
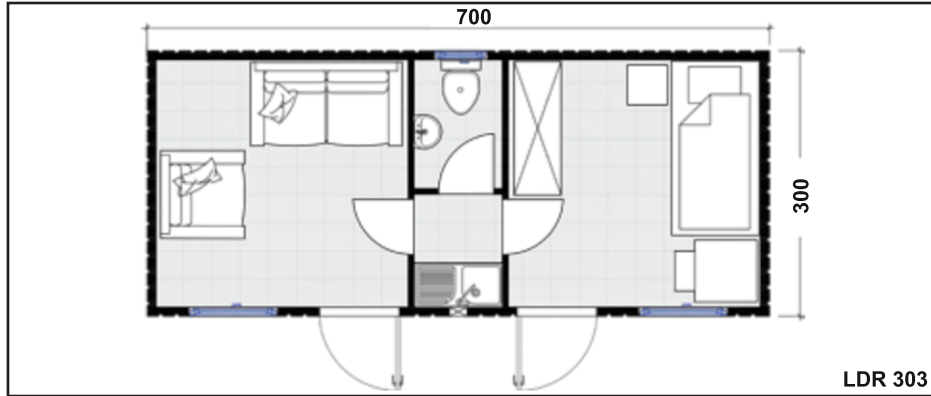
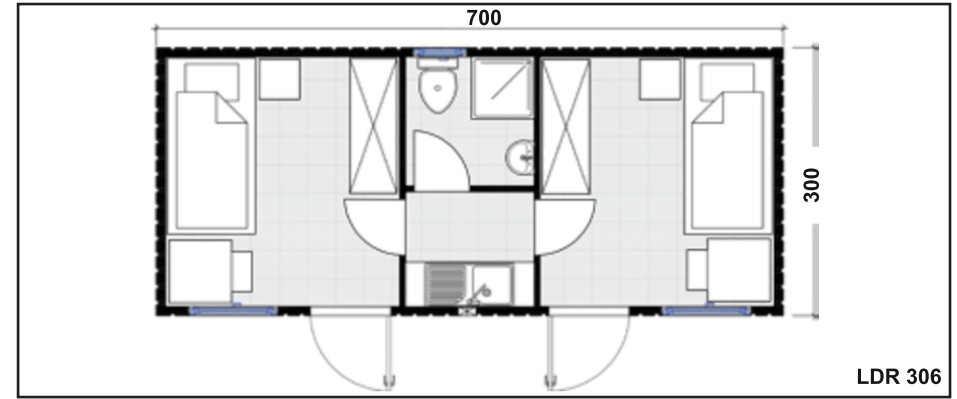
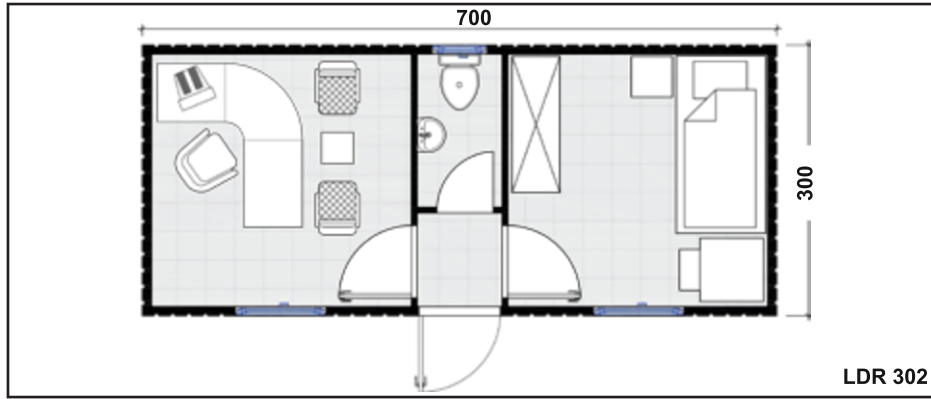




# KONTEYNER



# KONTEYNER





Siz TASARLAYIN biz YAPALIM...

# HAFİF ÇELİK YAPILAR



# HAFİF ÇELİK YAPILAR



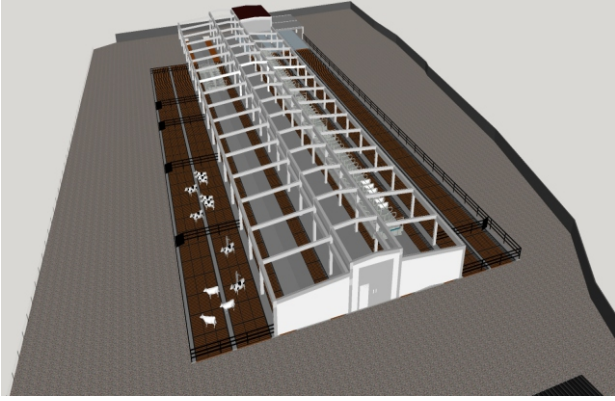
# ENDÜSTRİYEL VE TİCARİ YAPILAR



- ▶ ŞANTIYE BİNALARI
- ▶ FABRİKA BİNALARI
- ▶ DEPO VE HANGARLAR
- ▶ AĞIR SANAYİ TESİSLERİ



# ENDÜSTRİYEL VE TİCARİ YAPILAR



- YEMEKHANELER
- YATAKHANELER
- HASTANE VE HİZMET BİNALARI
- MODERN HAYVAN TESİSLERİ

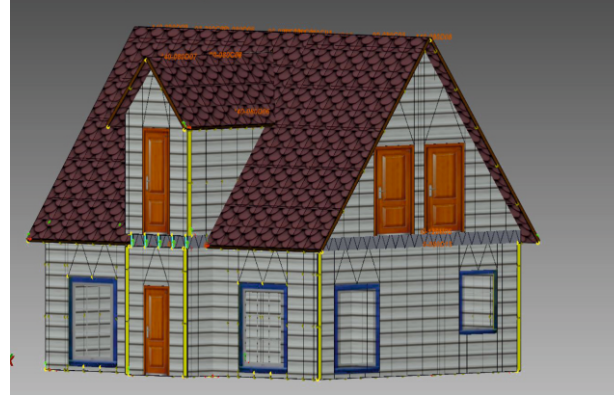


# PROJELERİMİZ





# PROJELERİMİZ



# PREFABRİK VE HAFİF ÇELİK YAPI AVANTAJLARI



▶ Uzun ömürlü, sağlam ve güvenilir yapılardır.

▶ Yüksek ısı ve ses yalıtımı sağlarlar.

▶ Esnekliği ve hafiflikleri sayesinde, depreme karşı en dayanıklı yapılardır.

▶ Tasarımda esneklik ve estetik çözümler sunar.

▶ Modüler sistemde ve fabrikasyon olarak üretildikleri için, imalat ve montaj süreleri hızlıdır.

▶ Geri dönüşümü en fazla olan yapı malzemeleridir.

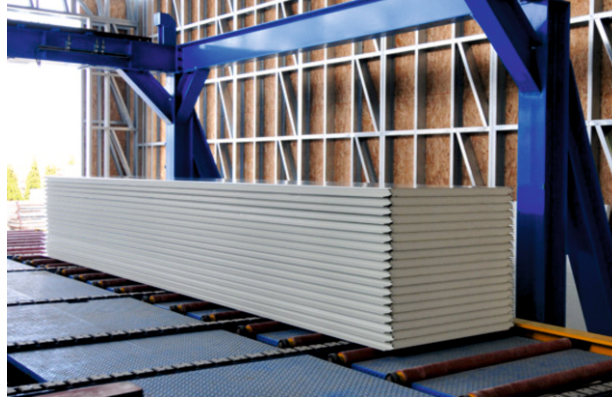
▶ Çevre dostu yapılardır.

▶ Galvanize çelikten imal edilen yapılar, korozyona ve paslanmaya karşı dayanıklıdır.

▶ Kısa sürede yapılıp, çabuk teslim avantajı sağlarlar.

▶ Her türlü iklim şartlarına uygun yapılardır. Dört mevsim rahatlıkla kullanılabilirler.

# ÜRETİMLERİMİZ



İMALATTA  
KULLANILAN MALZEMELER  
ISO 9001:2001  
ve  
TSE KALİTE BELGELERİNE  
SAHİPTİR.



# REFERANSLARIMIZ

